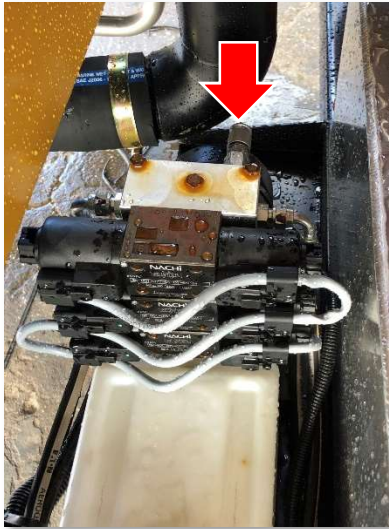
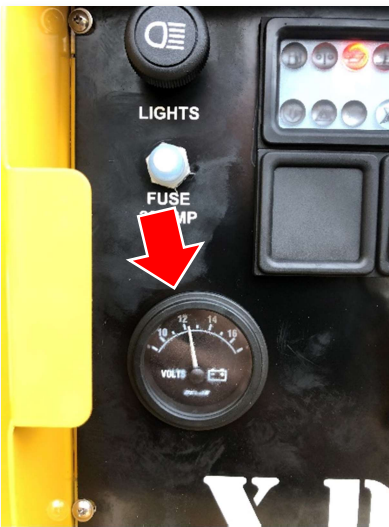


Claw Door Adjustment to Correct Leaking Debris Door Tank



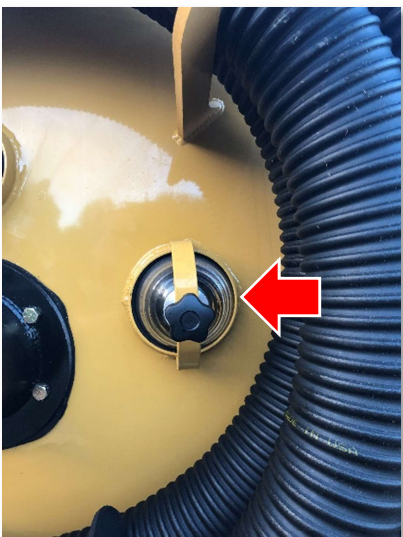
1

Use a gauge to make sure the hydraulic pressure is set at 2500 psi for trailer units or 3000 psi for PTO units.



2

Check that the battery is supplying between 12-14 volts.



3

Remove the sight glass located on the right side of the debris tank door.

Claw Door Adjustment to Correct Leaking Debris Door Tank



4

Look through the sight glass opening to ensure the lock pin is in the center of the bracket hole.



5

If the pin is not centered, open the door and remove the lock plate from the lock bar.



6

Turn the lock bar handle $\frac{1}{2}$ turn clockwise at a time until the lock pin is in the center of the bracket hole.

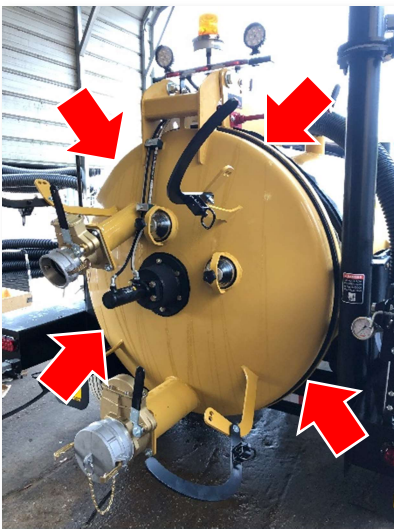
Claw Door Adjustment to Correct Leaking Debris Door Tank



7 Replace the lock plate, close the side door, and replace the sight glass.



8 Turn on the reverse pressure with the door locked. The pressure should read between 3-5 psi.



9 Feel all around the door seal to make sure all leaks have been stopped.